

GROUND FLOOR, EUROPEAN HOUSE, PEEL ROAD, DOUGLAS, IM1 5ED

£18sq/ft Ground Floor Recently Refurbished Office Space. Approx. 3,626sq/ft. 10 Onsite Allocated Parking Spaces.

For Rent - £18

PROPERTY SUMMARY

Price:	£18
Type:	Office
Status:	For Rent
Area:	Central, Douglas, EAST
Bedrooms:	0
Reception Rooms:	2
Bathrooms:	2

FULL DESCRIPTION

GROUND FLOOR, EUROPEAN HOUSE, PEEL ROAD, DOUGLAS, IM1 5ED

Accommodation

Ground Floor

Steps and a set of double doors lead through to:

Entrance Porch

Double doors through to:

Reception Area

Door into:

Large Open Plan Office Space (approx. 2,927sq/ft)

Multiple dual aspect double glazed windows. Door into:

Kitchen

Inner Lobby

Accessed from the open plan office space. Door into:

Office (approx. 699sq/ft)

Door providing access to the side of the property.

Communal Areas

- Reception/porch and inner lobby areas
- Stairwell and lift
- Gentleman's W.C.'s (Ladies are situated on the first floor)
- Disabled W.C.

Outside

There is a total of ten onsite allocated off road parking spaces, available at £500 per space exclusive.

Repairing Obligations

The lease is on effective full repairing and insuring terms via a service charge.

References

Financial and trade references will be required.

Services

All main services are connected. Double glazed throughout.

Directions

Travelling out of the town centre along Peel Road, continue past Pulrose Bridge traffic lights where European House can be found directly on the left

AT A GLANCE

Type:	Office
Status:	For Rent
Price:	£18
Area:	Central, Douglas, EAST

INSIDE

Bedrooms:	0
Reception Rooms:	2
Bathrooms:	2
En-suite:	0
Windows:	UPVC Double Glazed
Heating:	Other
Furnished:	No

OUTSIDE

Garage:	Off Street Parking
Front Garden:	None
Rear Garden:	None
Acreage:	0
Outbuildings:	No

WHO TO CONTACT



Jamie Irving - 07624 406276

Cowley Groves Douglas

Landline: 01624 625888

Email: jirving@cowleygroves.com

hand side, occupying a prominent corner location.

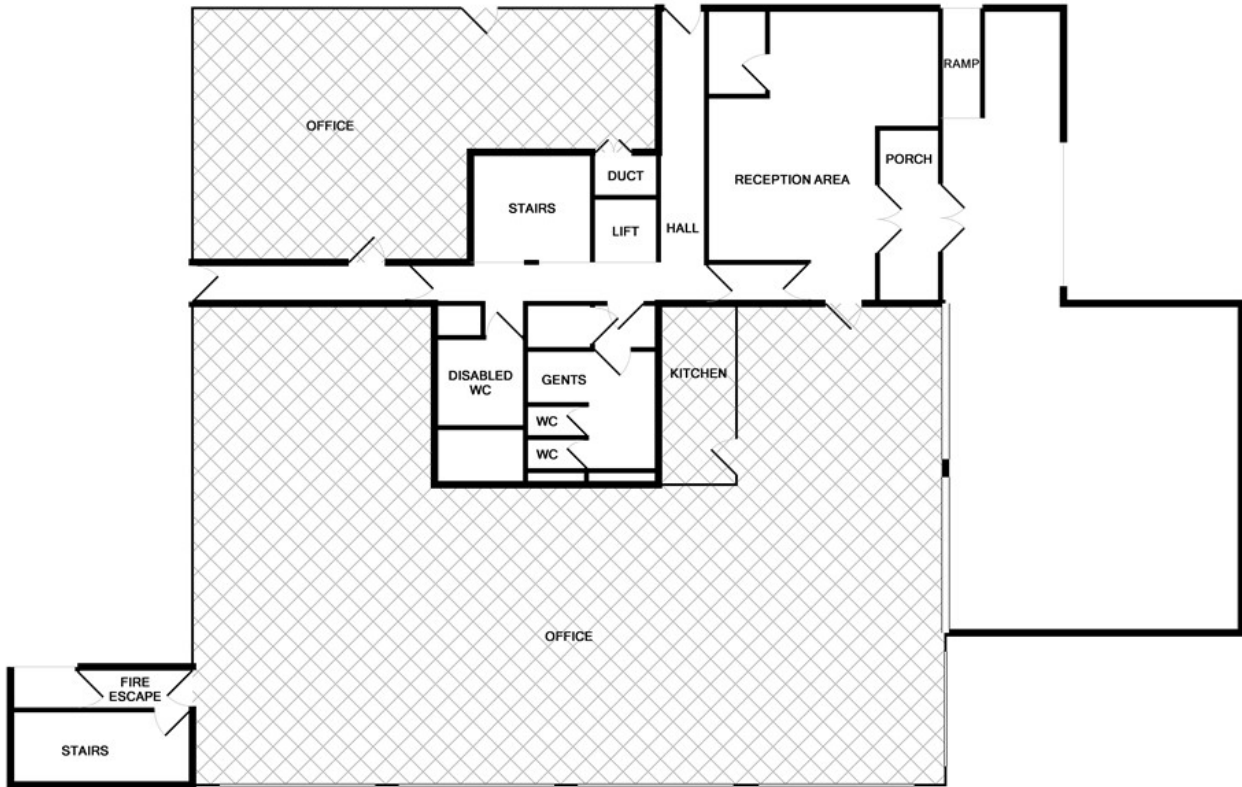
GALLERY

GROUND FLOOR, EUROPEAN HOUSE, PEEL ROAD, DOUGLAS, IM1 5ED



FLOORPLANS

GROUND FLOOR, EUROPEAN HOUSE, PEEL ROAD, DOUGLAS, IM1 5ED



Whilst every attempt has been made to ensure the accuracy of the floor plan contained here, measurements of doors, windows, rooms and any other items are approximate and no responsibility is taken for any error, omission, or mis-statement. This plan is for illustrative purposes only and should be used as such by any prospective purchaser. The services, systems and appliances shown have not been tested and no guarantee as to their operability or efficiency can be given.
Made with Metropix ©2017

LOCATION

GROUND FLOOR, EUROPEAN HOUSE, PEEL ROAD, DOUGLAS, IM1 5ED

