



APT. 3 DELAMERE APARTMENTS, 6 CASTLE DRIVE, DOUGLAS, IM2 4LX

NEW PRICE. Competitively Priced Modern Ground Floor Apartment. Short Walk to Douglas Promenade and Beach. Refurbished Communal Areas. Internal Inspection Recommended.

For Sale - £149,950

PROPERTY SUMMARY

Price:	£149,950
Type:	Apartment
Status:	For Sale
Area:	Central, Douglas, EAST
Bedrooms:	2
Reception Rooms:	1
Bathrooms:	1

FULL DESCRIPTION

APT. 3 DELAMERE APARTMENTS, 6 CASTLE DRIVE, DOUGLAS, IM2 4LX

Accommodation

Ground Floor

Secure telephone entry operated inner door. Secure post box. Modern communal hallway with solid light oak glass balustrade and tiled flooring.

Apartment 3

Solid oak front door. Oakwood flooring throughout. Secure telephone entry point.

Living Room/Kitchen (approx. 18'0 x 12'0)

Continued oak wood flooring. Large uPVC double glazed bay window providing sea views. Ceiling downlighting. Wall mounted television connection and satellite points. Telephone point.

Kitchen

Fitted with oak effect fronted base, wall and drawer units. Granite effect worktops incorporating a single stainless steel bowl sink with mixer tap and drainer. Breakfast bar. Integrated appliances include: fridge freezer. Electrolux oven and grill with 4 ring hob and extractor facilities above. Dishwasher. Power points. Ceiling downlighting.

Bedroom 1 (approx. 13'7 x 8'8)

Large uPVC double glazed window allowing natural light. Fitted mirror wardrobes. Multiple power points. Telephone point.

Bedroom 2 (approx. 13'1 x 9'0)

Large uPVC double glazed window allowing natural light. Fitted mirror wardrobes. Television and satellite connection points. Multiple power points. Telephone point.

Bathroom (approx. 6'3 x 5'6)

Ultra modern three piece suite comprising panelled bath with shower attachment and splash screen. Pedestal wash hand basin and low flush toilet. Chrome heated towel rail. Large high gloss tiles throughout. Extractor facilities.

Airing Cupboard

Wall mounted gas fired central heating boiler. Plumbed for washing machine.

Inclusions

All fittings and fixtures.

Services

AT A GLANCE

Type:	Apartment
Status:	For Sale
Price:	£149,950
Area:	Central, Douglas, EAST

INSIDE

Bedrooms:	2
Reception Rooms:	1
Bathrooms:	1
En-suite:	0
Windows:	UPVC Double Glazed
Heating:	Gas Central Heating
Furnished:	No

OUTSIDE

Garage:	
Front Garden:	None
Rear Garden:	None
Acreage:	0
Outbuildings:	No

WHO TO CONTACT



Simon Dixon FNAEA - 07624 418676

Cowley Groves Douglas

Landline: 01624 625888

Email: sdixon@cowleygroves.com

All mains services are connected. Gas fired central heating. uPVC double glazed throughout.

Rates

£637.52 (incl. water rates) 2019.

Directions

Travelling out of Douglas along the Promenade continue through the Broadway traffic lights onto the Queens Promenade. Take the second turning on the left hand side just after the Empress Hotel and Spectrum Apartments proceed around the one way road bearing right back down Castle Drive towards the Promenade where Delamere Apartments can be clearly identified by our For Sale board on the right hand side.

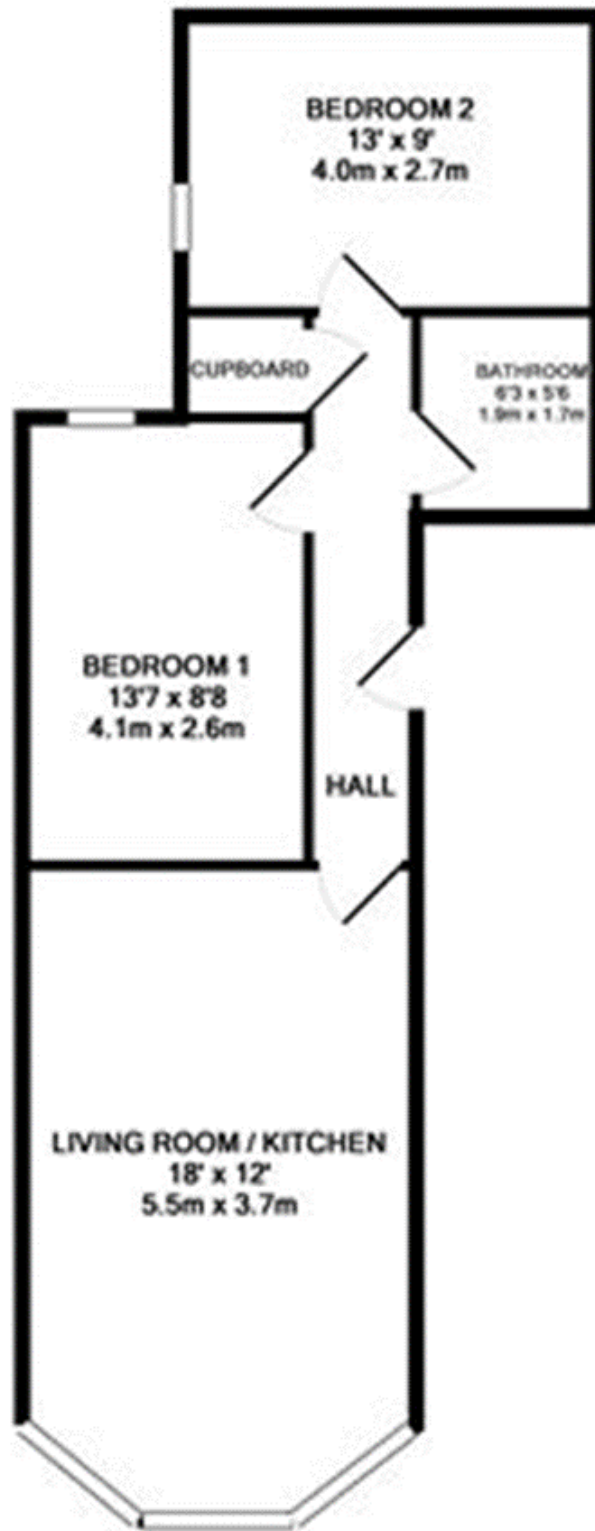
GALLERY

APT. 3 DELAMERE APARTMENTS, 6 CASTLE DRIVE, DOUGLAS, IM2 4LX



FLOORPLANS

APT. 3 DELAMERE APARTMENTS, 6 CASTLE DRIVE, DOUGLAS, IM2 4LX



TOTAL APPROX. FLOOR AREA 562 SQ.FT. (52.2 SQ.M.)

Whilst every attempt has been made to ensure the accuracy of the floor plan contained here, measurements of doors, windows, rooms and any other items are approximate and no responsibility is taken for any error, omission, or mis-statement. This plan is for illustrative purposes only and should be used as such by any prospective purchaser. The services, systems and appliances shown have not been tested and no guarantee as to their operability or efficiency can be given.

Made with Metropix ©2014

LOCATION

APT. 3 DELAMERE APARTMENTS, 6 CASTLE DRIVE, DOUGLAS, IM2 4LX

